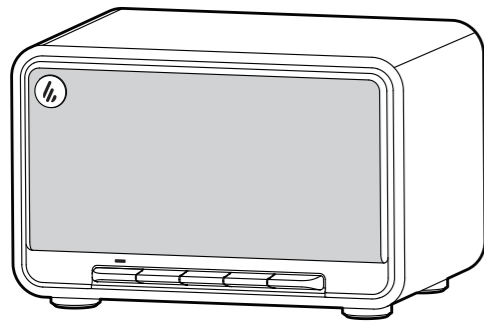


D32 Tabletop Wireless Speaker



Quick Start Guide

Model: EDF100080



Manual Edition 1.1, May 2024
IB-200-D00320-02

For more information, please visit our website:

www.edifier.com



@Edifierglobal @Edifier_Global @Edifier_Global

EDIFIER ConneX app



FCC ID: Z9G-EDF227
IC: 10004A-EDF227

Edifier International Limited
P.O. Box 6264
General Post Office
Hong Kong

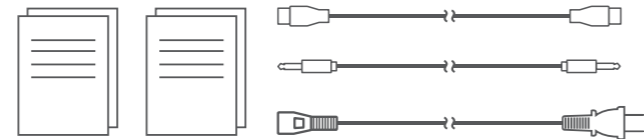
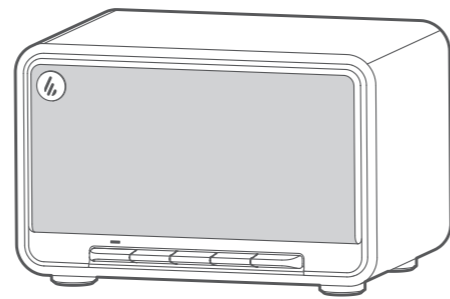
Tel: +852 2522 6989
Fax: +852 2522 1989

www.edifier.com
© 2024 Edifier International Limited. All rights reserved.
Printed in China

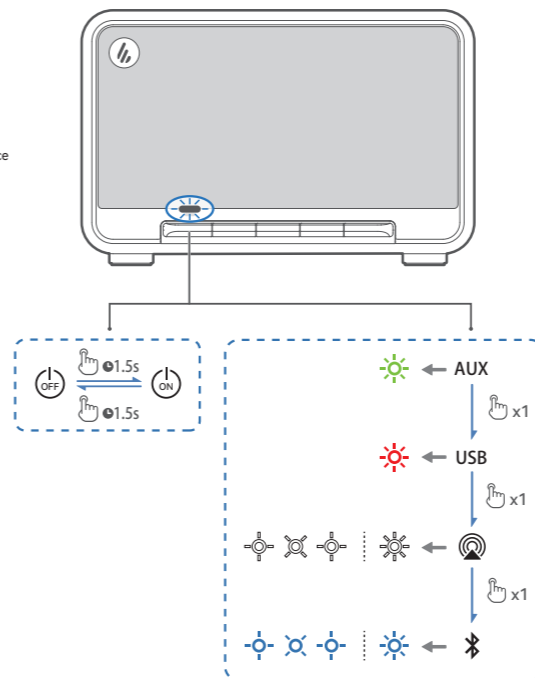
NOTICE:
For the need of technical improvement and system upgrade, information contained herein may be subject to change from time to time without prior notice.
Products of EDIFIER will be customized for different applications. Pictures and illustrations shown on this manual may be slightly different from actual product. If any difference is found, the actual product prevails.



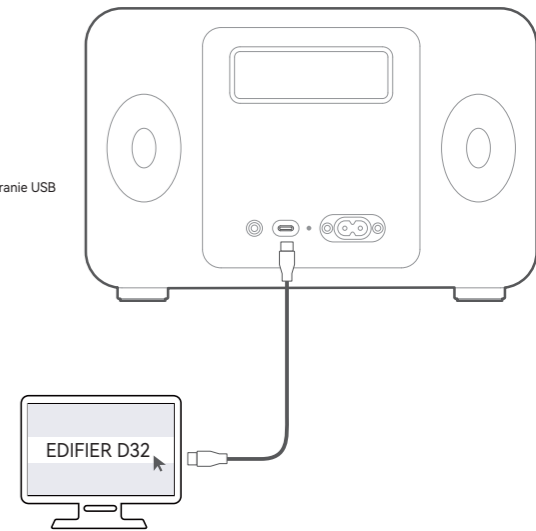
- EN What's in the box?
- FR Contenu de la boîte
- ES Contenido de la caja
- DE Lieferumfang
- IT Contenuto della confezione
- PT Conteúdo da caixa
- NL Wat zit er in de doos?
- PL Zawartość pudełka
- CZ Co je v krabici?
- SK Čo je v krabici?
- DK Kassens indhold
- GR Τι υπάρχει στο κουτί?
- SV Vad finns i boxen?
- BG Какво има в кутията?
- RO Ce se află în cutie?



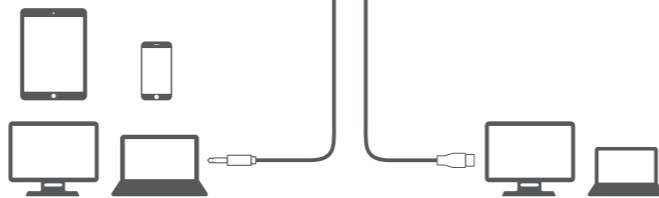
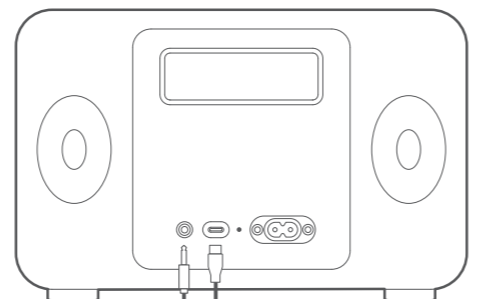
- EN Source selection
- FR Sélection de la source
- ES Selección de fuente
- DE Quellenauswahl
- IT Selezione sorgente
- PT Seleção de fonte
- NL Bron selectie
- PL Wybór źródła
- CZ Vyběr zdroje
- SK Vyber zdroja
- DK Kildevalg
- GR Επιλογή πηγής
- SV Källval
- BG Избор на източник
- RO Selectare sursă



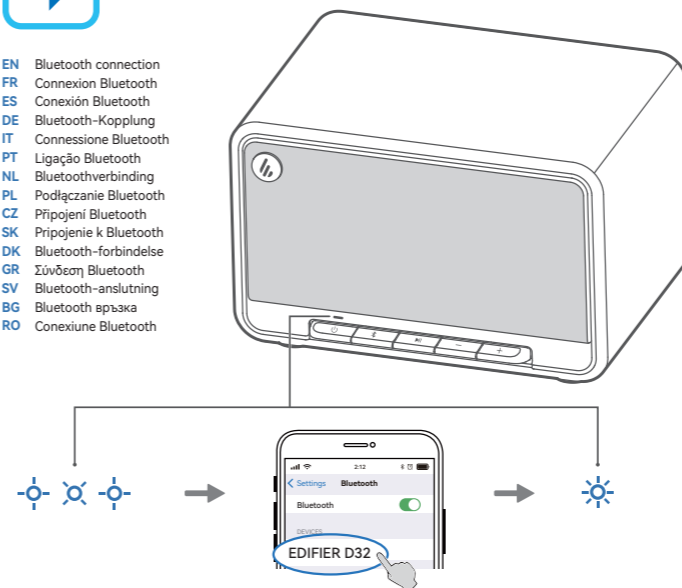
- EN USB connection
- FR Connexion USB
- ES Conexión USB
- DE USB-Anschluss
- IT Collegamento USB
- PT Conexão USB
- NL USB-aansluiting
- PL Złącze USB
- CZ Připojení USB
- SK Pripojenie cez rozhranie USB
- DK USB-tilslutning
- GR Σύνδεση USB
- SV USB-anslutning
- BG Връзка USB
- RO Conexiune USB



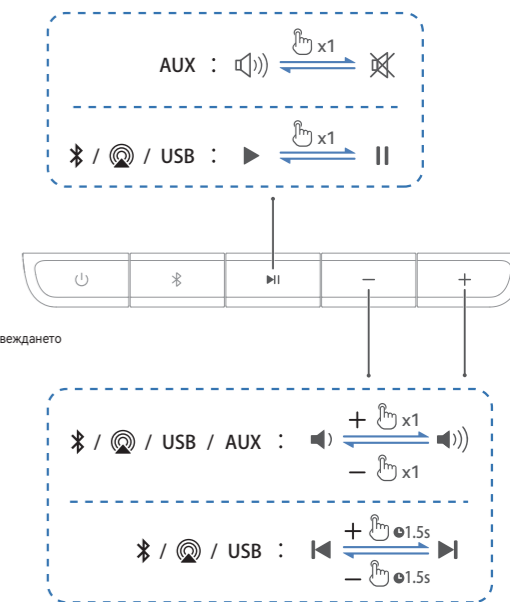
- EN Cable connection
- FR Connexion par câble
- ES Conexión de cable
- DE Kabelverbindung
- IT Collegamento cavo
- PT Conexão via cabo
- NL Kabelverbinding
- PL Złącze kablowe
- CZ Připojení kabelu
- SK Káblové pripojenie
- DK Kabeltilslutning
- GR Σύνδεση καλωδίου
- SV Kabelanslutning
- BG Кабелна връзка
- RO Conexiune cablu



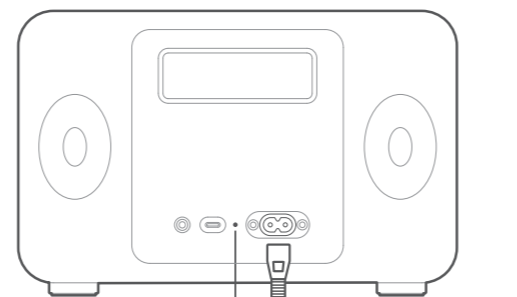
- EN Bluetooth connection
- FR Connexion Bluetooth
- ES Conexión Bluetooth
- DE Bluetooth-Kopplung
- IT Connessione Bluetooth
- PT Ligação Bluetooth
- NL Bluetoothverbinding
- PL Podłączenie Bluetooth
- CZ Připojení Bluetooth
- SK Pripojenie k Bluetooth
- DK Bluetooth-forbindelse
- GR Σύνδεση Bluetooth
- SV Bluetooth-anslutning
- BG Bluetooth връзка
- RO Conexiune Bluetooth



- EN Play control
- FR Contrôle de lecture
- ES Control de reproducción
- DE Abspielsteuerung
- IT Controllo riproduzione
- PT Controlo de reprodução
- NL Afspelinbediening
- PL Sterowanie odtwarzania
- CZ Ovládání přehrávání
- SK Ovládanie prehrávania
- DK Afspilningskontrol
- GR Έλεγχος αναπαραγωγής
- SV Uppspelningskontroll
- BG Управление на възпроизвеждането
- RO Control redare



- EN Charging
- FR Chargeur
- ES Carga
- DE Laden
- IT Carica
- PT Carregamento
- NL Opladen
- PL Ładowanie
- CZ Nabíjení
- SK Nabíjanie
- DK Opladning
- GR Φόρτιση
- SV Ladda
- BG Заряджәне
- RO Încărcare



- EN Apple Airplay
- FR Apple Airplay
- ES Apple Airplay
- DE Apple Airplay
- IT Apple Airplay
- PT Apple Airplay
- NL Apple Airplay
- PL Apple Airplay
- CZ Apple Airplay
- SK Apple Airplay
- DK Apple Airplay
- GR Apple Airplay
- SV Apple Airplay
- BG Apple Airplay
- RO Apple Airplay



